

N.E. 1/4 OF N.W. 1/4

57

SECTION 22, T.6N.,R.1W., S.L.B.&M.

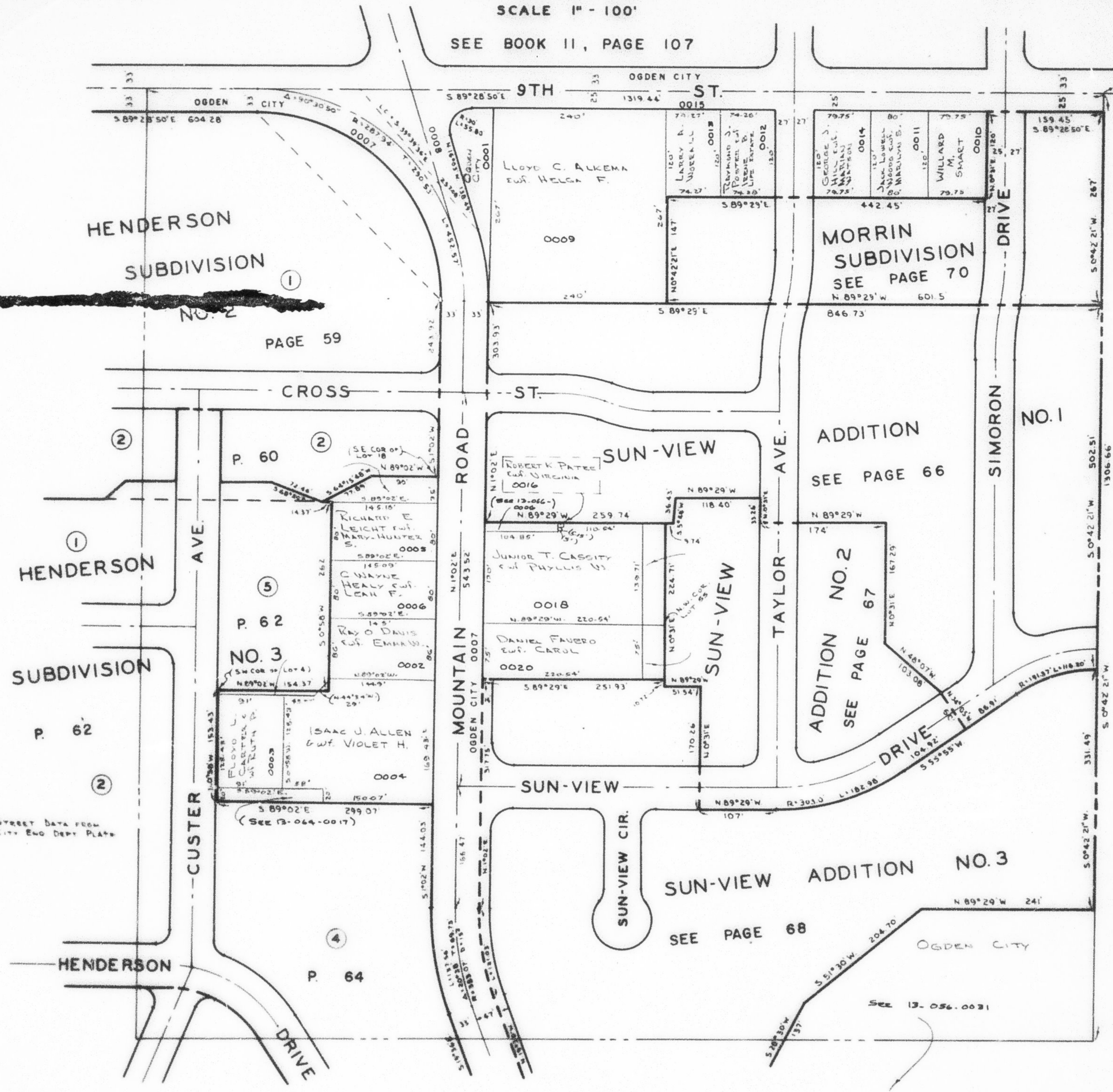
TAXING UNIT : 25

IN OGDEN CITY

PREFIX : 13-057

SCALE 1" = 100'

SEE BOOK 11, PAGE 107



N.E. Cor. of N.W. 1/4 of Sec. 22

SEE PAGE 45

NOTE: STREET DATA FROM OGDEN CITY ENG. DEPT. PLATS